



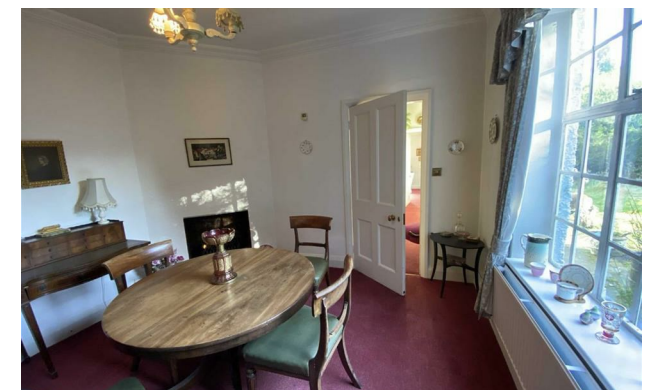
jordan fishwick

ALTRINCHAM
Burlington Road



Burlington Road, Altrincham, WA14 1HR

Offers In Excess Of £995,000



The Property

Burlington Cottage - A four bed detached house occupying a private 0.25 acre plot. No onward chain.

Located on Burlington Road within walking distance of Altrincham town centre and the Metrolink. Perfect for access to shops, bars, restaurants.

In need of updating but brimming with charming cottage features. In brief the property comprise; entrance hallway, kitchen with dining room, lounge spanning the full width of the property. To the first floor you have three double bedrooms, a spacious single and a family bathroom. Externally you have large private garden to the side and rear. Accessed through secure gates and with driveway parking for two cars with a car port to accompany. No onward chain

Directions

WA14 1HR



- No Onward Chain
- Four Bedroom Detached Cottage
- Private side and Rear Garden
- Peaceful Altrincham Location
- Driveway Parking with Carport
- Substantial Plot

Postcode - WA14 1HR

EPC Rating -

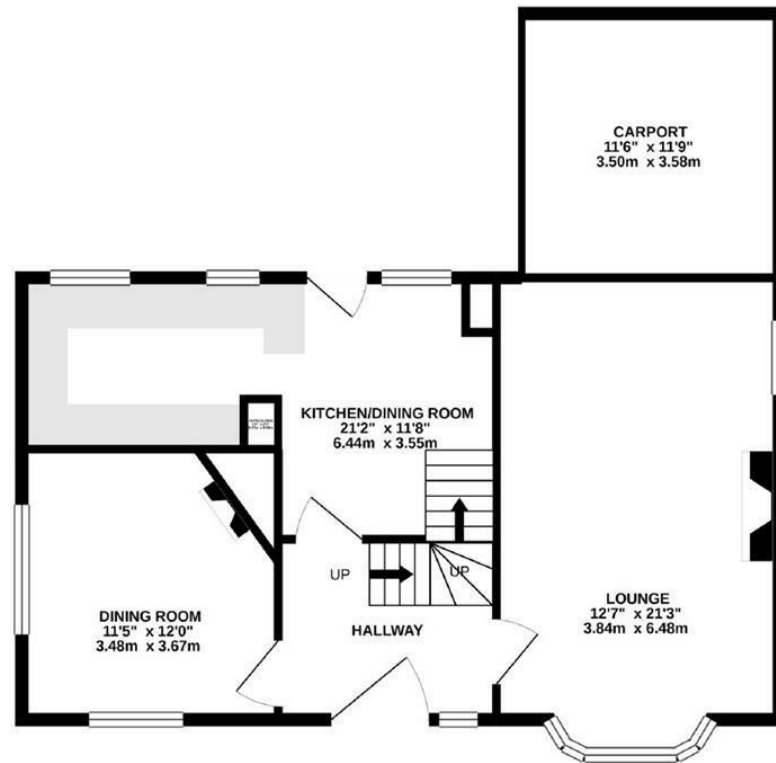
Floor Area - sq ft

Local Authority - Trafford Council

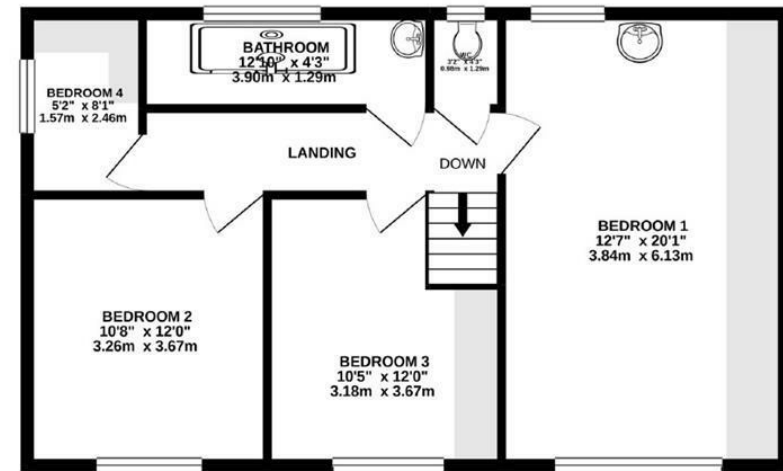
Council Tax - F



GROUND FLOOR
799 sq.ft. (74.3 sq.m.) approx.



1ST FLOOR
679 sq.ft. (63.1 sq.m.) approx.



TOTAL FLOOR AREA : 1478 sq.ft. (137.3 sq.m.) approx.

Whilst every attempt has been made to ensure the accuracy of the floorplan contained here, measurements of doors, windows, rooms and any other items are approximate and no responsibility is taken for any error, omission or mis-statement. This plan is for illustrative purposes only and should be used as such by any prospective purchaser. The services, systems and appliances shown have not been tested and no guarantee as to their operability or efficiency can be given.
Made with Metropix ©2021



These particulars are believed to be accurate but they are not guaranteed and do not form a contract. Neither Jordan Fishwick nor the vendor or lessor accept any responsibility in respect of these particulars, which are not intended to be statements or representations of fact and any intending purchaser or lessee must satisfy himself by inspection or otherwise as to the correctness of each of the statements contained in these particulars. Any floorplans on this brochure are for illustrative purposes only and are not necessarily to scale.

Offices at: Chorlton, Didsbury, Disley, Hale, Glossop, Macclesfield, Manchester Deansgate, Manchester Whitworth Street, New Mills, Sale, Wilmslow and Withington

0161 929 9797

hale@jordanfishwick.co.uk
www.jordanfishwick.co.uk